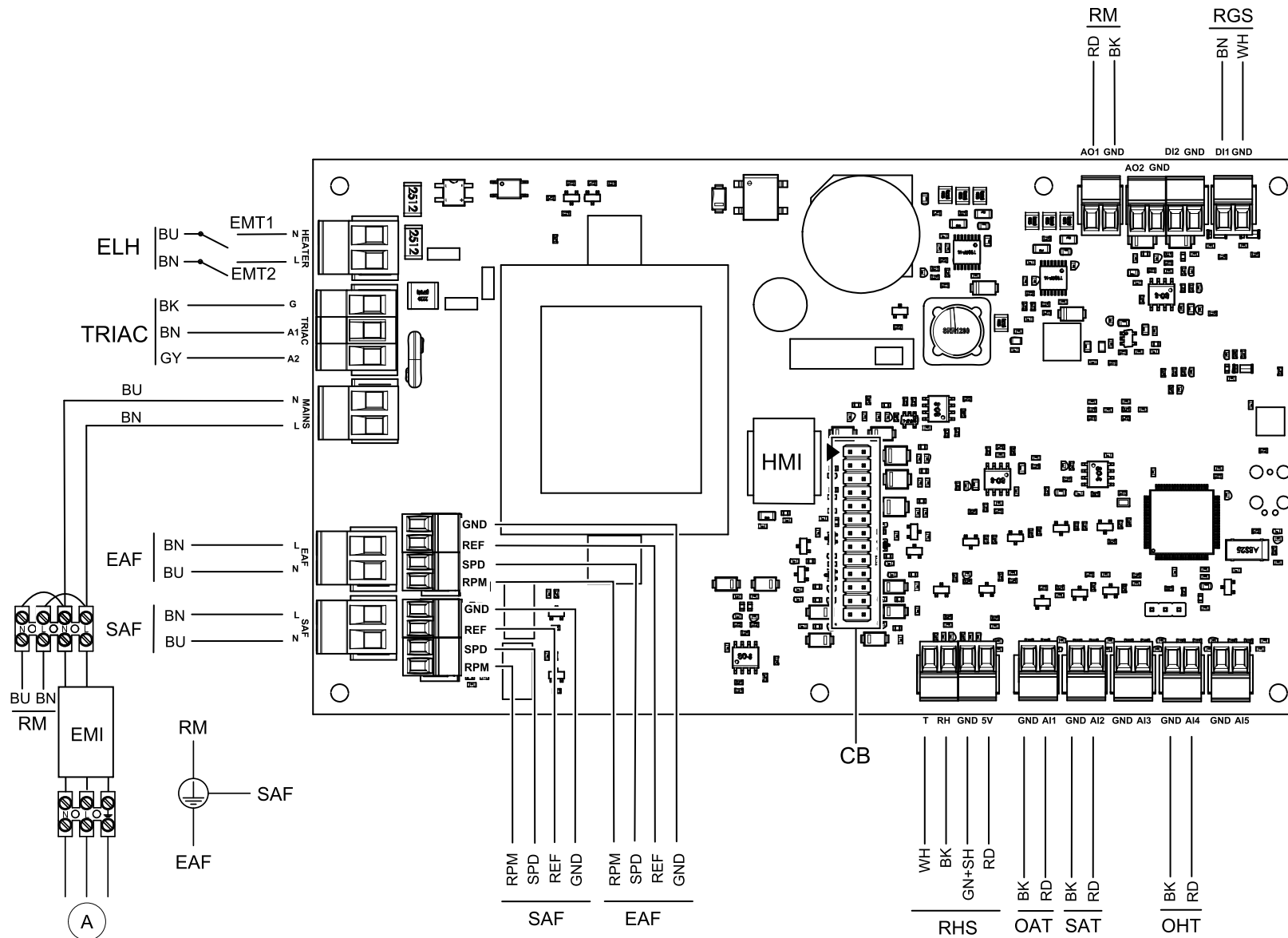
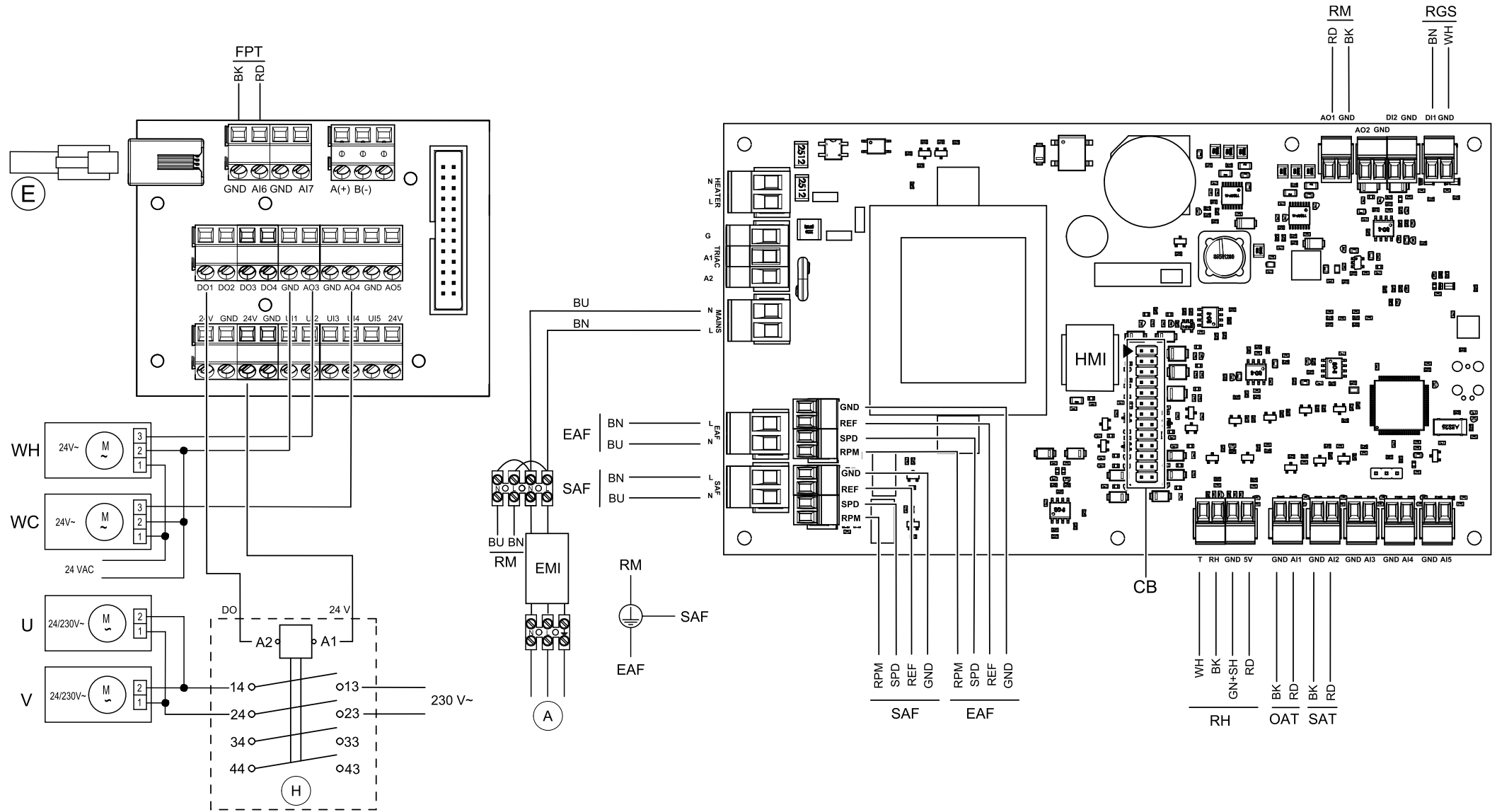


Standard configuration



Units with hot water heating + water cooling



Symbol	Description
SAF	Supply air fan.
EAF	Extract air fan.
SAT	Supply air temperature sensor. ¹
H	Contactora (on/off switch).
EMI	Electromagnetic interference filter for 230 V AC.
ELH	Electrical heater.
CB	Connection to external connection board.
OHT	Overheat protection sensor. ²
OAT	Outdoor air sensor.
FPS	Frost protection sensor ³
RM	Rotor motor.
EMT2	Emergency thermostat, manual reset 120°C (normally closed contact)
EMT	Emergency thermostat, automatic reset 60°C (normally closed contact)
RGS	Rotor guard sensor.
RH	Internal relative humidity sensor.
E	External control panel.
A	Mains supply 230 V~.
WH	Water valve actuator, heating. ⁴
WC	Water valve actuator, cooling. ⁵
U	Damper motor Outside air.
V	Damper motor Exhaust air.
BU	Blue.
BN	Brown.
BK	Black.
RD	Red.
YE	Yellow.
GY	Gray.

WH	White.
GN	Green.

¹ For water heating/cooling battery,

² Units with electrical re-heater battery.

³ For water heating battery.

⁴ Water heater can be connected to any free analog output (AO) either on connection board or main board and then configured in HMI.

⁵ Water cooler can be connected to any free analog output (AO) either on connection board or main board and then configured in HMI.