

## Thermoplus ECVTN



### Easily placed panel heater with built-in control

Thermoplus is mounted above windows and gives an efficient protection against cold draught. The slim shape also makes it suitable for heating areas with limited space, like for example bathrooms. Thermoplus can furthermore be a cost-effective and flexible alternative to floor heating.

#### Pleasant and silent comfort

Panel heaters give a soft, pleasant heat and individual comfort can be created with spot and zone heating. No moving parts mean a silent system that does not cause air movements and the hygiene is improved when the spread of dust, bacteria or odours is reduced.

#### Operation and economy

Panel heaters have an easy and flexible installation and require a minimum of maintenance. Ceiling mounting leaves the walls free and increases safety. They give instant heat and the room temperature can be reduced with maintained comfort.

#### Suited for most environments

Thermoplus is covered with white enamel which makes it discreet and scratch-resistant. The slim shape makes it practically invisible when mounted in the ceiling angle.



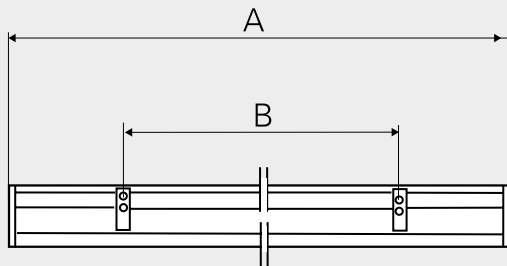
#### Product specifications

- Thermoplus ECVTN is equipped with a built-in Ecodesign approved thermostat (+5 – +37 °C).
- Wall brackets included. Ceiling mounting kit is available as an accessory.
- Front panel of white scratch-resistant enamelled aluminium. Colour: RAL 9010. Rear panel of hot zinc-plated steel panels.

## Thermoplus ECVTN for wet rooms, with built-in thermostat (IP44)

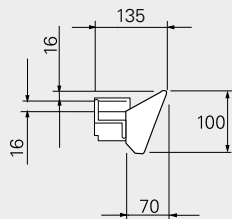
Item number	Type	Heat output [W]	Voltage [V]	Amperage [A]	Max. surface temp. [°C]	LxHxD [mm]	Weight [kg]
153948	ECVTN30021	300	230V~	1,3	180	870x100x135	2,3
153949	ECVTN55021	550	230V~	2,4	180	1505x100x135	4,6
153956	ECVTN70021	700	230V~	3,0	180	1810x100x135	5,0

## Dimensions

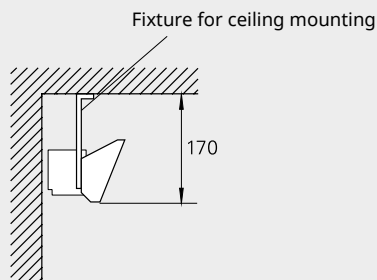


	A [mm]	B [mm]
ECVTN300	870	400
ECVTN550	1505	900
ECVTN700	1810	1200

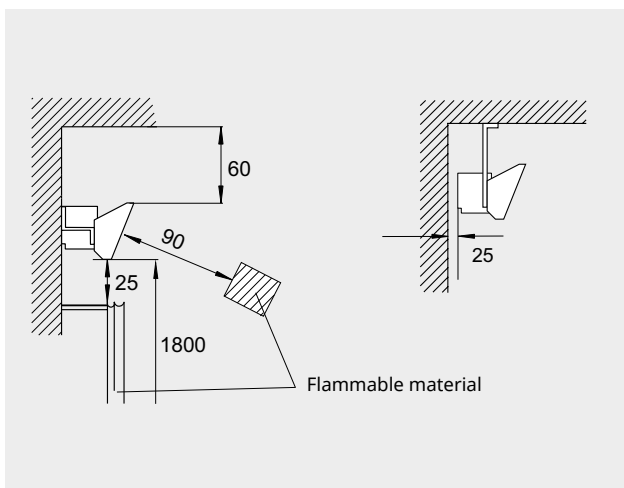
### Mounting on the wall



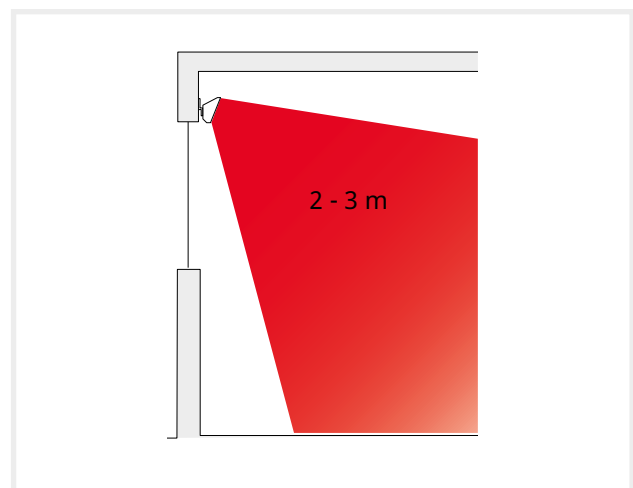
### Mounting on the ceiling

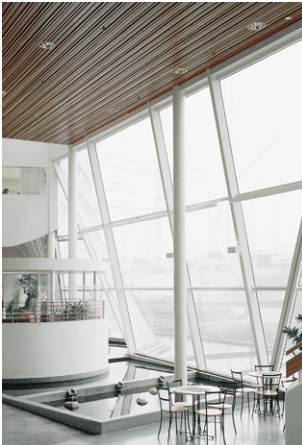


## Minimum distances



## Installation height





## Mounting and connection

Thermoplus is installed horizontally e.g. at the ceiling angle above the window. Wall brackets included. Ceiling mounting kit is available as an accessory. Thermoplus is intended for permanent installation.

## Accessories

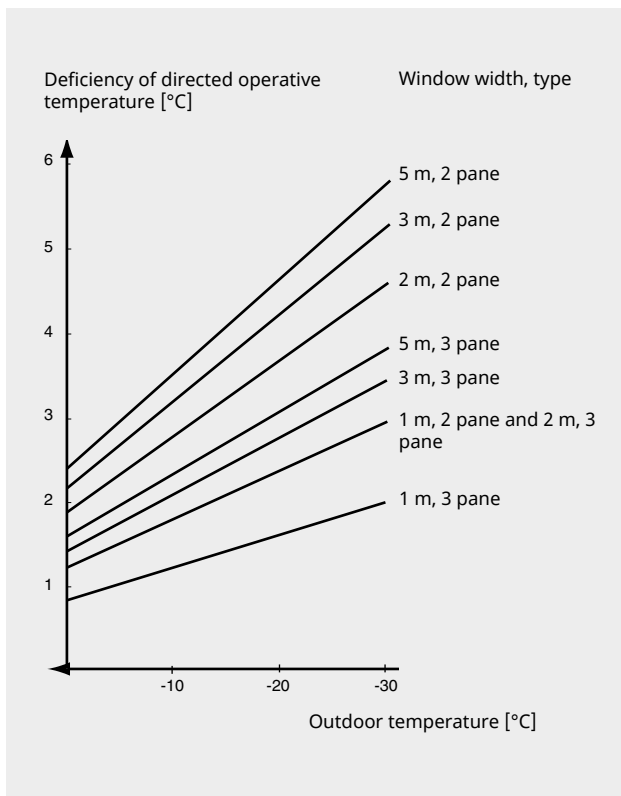


### TF1, ceiling mounting kit

To mount Thermoplus on the ceiling.

Item number	Type	Description	Consists of
10114	TF1	Ceiling mounting kit	2

## Effect on the temperature near windows



### Temperature differentials

The diagram to the left refers to temperature loss through a window that is 1.7 metre high and is measured 1.0 metre into the room from the centre of the window.

### Heat contribution

The contribution to operative temperature is measured at a ceiling height of 2.4 metres, one meter into the room from the centre of the window.

