



Systemair Mfg. Inc. certifies that the IV series shown herein is licensed to bear the AMCA seal. The ratings shown are based on tests and procedures performed in accordance with AMCA Publication 211 and AMCA Publication 311 and comply with the requirements of the AMCA Certified Ratings Program.

IV-50 EC - High Induction Centrifugal Jet Fan.

The low profile IV-50 EC utilizes the combined performance factors including airflow, induction, thrust and throw to more effectively reduce CO levels and achieve a Dilution Ventilation Strategy in the most energy efficient manner.

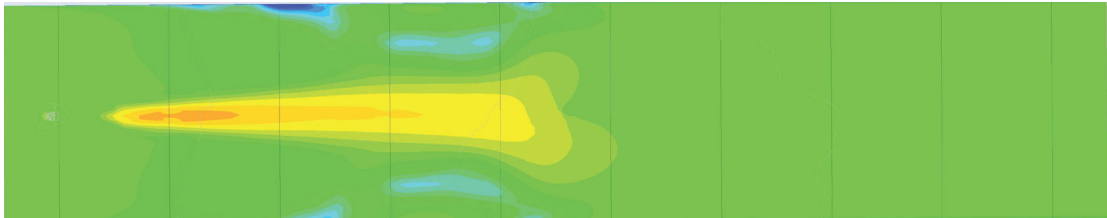
- **AMCA Certified**
Industry's first Jet Fan certified and tested in accordance with the ANSI/AMCA 250 Laboratory Methods of Testing Jet Tunnel Fans for Performance and the ANSI/AMCA 300 Reverberant Room Methods for Sound Testing of Fans.
- **High Performance**
Produces 51N Thrust, Induction Factor of 22.9 and Throw distance of 154' (47m) to Terminal Velocity 196 fpm (1m/s).
- **EC Driven**
EC motor enables Demand Control Ventilation and reduces energy consumption nearly 30%. Allows for soft start and eliminates need for a motor starter & VFD.
- **Low Profile**
Height of less than 10.25" and footprint of 32.8" x 50.5" makes it the industry's most powerful compact Centrifugal High Induction Jet Fan.
- **Easy Installation**
Includes large, easy access electrical box with quick-connect lever terminals.
- **Control Options**
Speed control options include PWM, 0-10V, 4-20mA, or simple on/off to any set speed, and speed feedback reference.
- **Warranty**
The IV-50 EC is backed by a 3 year limited warranty.



COMPUTATIONAL FLUID DYNAMICS ANALYSIS



Contour plot of Velocity magnitude (ft/min) at center of the Garage in vertical Plane



Contour plot of Velocity magnitude (ft/min) at 1.5 meter Height from Ground of Garage in Horizontal Plane



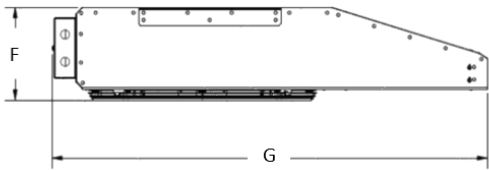
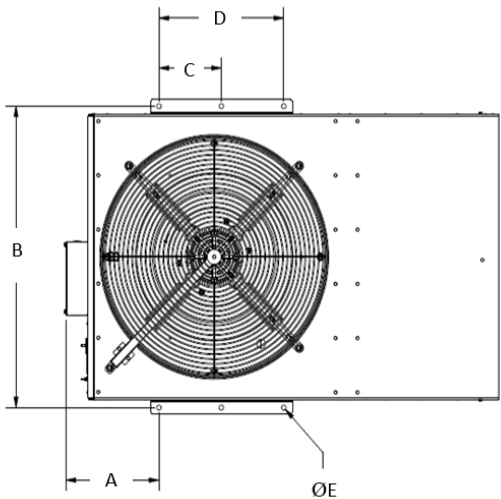
TECHNICAL & ACOUSTICAL DATA

IV		50-EC
Voltage		V 208-277
Frequency		Hz 50/60
Motor output		HP 1.8
Amperage		FLA 11.0-8.6
RMP		RPM 1400
Max. airflow (variable)		CFM 3517
Thrust		N 51
Thrust/Fan input power		N/kW 30.5
Motor insulation class		Class F
Ambient temperature rating		°C 45
Weight		lbs 162

Octave Bands Sound Power Levels, Lw(dB)^							
63	125	250	500	1000	2000	4000	8000
80	93	91	87	85	83	81	76
Total Sound*							
dB(A) LpA@10'							
73							

^Values shown are for sound power levels (Lw) for installation Type A: free inlet, free outlet. The Sound Power Level ratings shown are in decibels, referred to 10⁻¹² watts, calculated per AMCA Standard 301.
*The sound pressure values (LpA) shown are based on a hemispherical free field at 3.0 m (10 ft). dB(A) levels are not licensed by AMCA international.

DIMENSIONS



	A	B	C	D	ØE	F	G
IV-50 EC	10.8 (276)	32.8 (834)	7.3 (185)	14.5 (370)	.5 (14)	10.2 (259)	50.5 (1284)

Dimensions are in inches (mm)