

## MUB(A)

### Features

The MUB (A) fans have impellers with backward curved blades manufactured from Galvanised Iron.

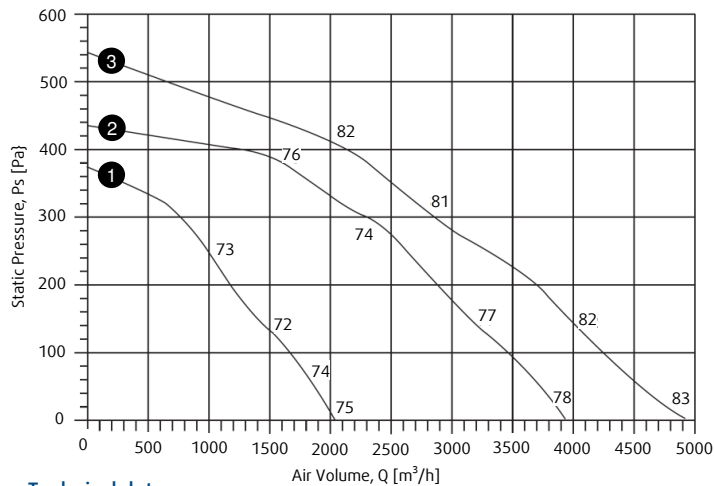
The MUB (A) 355-450 is equipped with external rotor motors. MUB (A) 500-630 are driven by an IEC standard motor.

The casing consists of an aluminium frame with fiberglass reinforced plastic / aluminium corners and double skin, galvanised steel panels with a 20mm mineral wool insulation. Panels are removable, allowing flexible ventilation solutions.

To avoid condensation, the profile is provided with a separate chamber to fix screws. The Multi-box fans are delivered straight through airflow but can easily be rebuilt due to removable panels. This allows ventilation solutions. MUB (A) can also be used as extract or supply air unit in air handling units. Installation in any mounting position is possible.



### Performance curves



- ❶ MUB(A) 025 355E4-A2 – 1383rpm
- ❷ MUB(A) 042 400E4-A2 – 1385rpm
- ❸ MUB(A) 042 450E4-A2 – 1335rpm

### Technical data

	MUB(A)		025 355E4-A2	042 400E4-A2	042 450E4-A2
Voltage	V		230	230	230
Frequency	Hz		50	50	50
Phase	-		1	1	1
Max. Motor Input Watts	W		225	483	781
Max. Current	A		0.94	2.08	3.43
Nominal Speed	RPM		1383	1385	1335
Max. Airflow	m <sup>3</sup> /h		2034	3935	4936
Sound Pressure level at 3m	dB(A)		55	58	63
Max. Temperature	°C		40	40	40
Motor Insulation Class			F	F	F
Motor Protection	IP		44	44	44
Capacitor	µF		6	14	14
Weight	kg		37	58	60

### Sound data

Single figure on performance curves are overall inlet LwiA sound power levels, derived from measurements taken in laboratory specifically under ducted conditions. Following is the inlet Lwi sound power levels (dB) in eight octave bands maximum airflow (0Pa) :

Model	63	125	250	500	1k	2k	4k	8k	Overall
025 355E4-A2	86	88	74	69	63	60	63	55	87
042 400E4-A2	90	88	79	75	67	64	63	71	90
042 450E4-A2	89	92	82	79	74	74	74	74	92

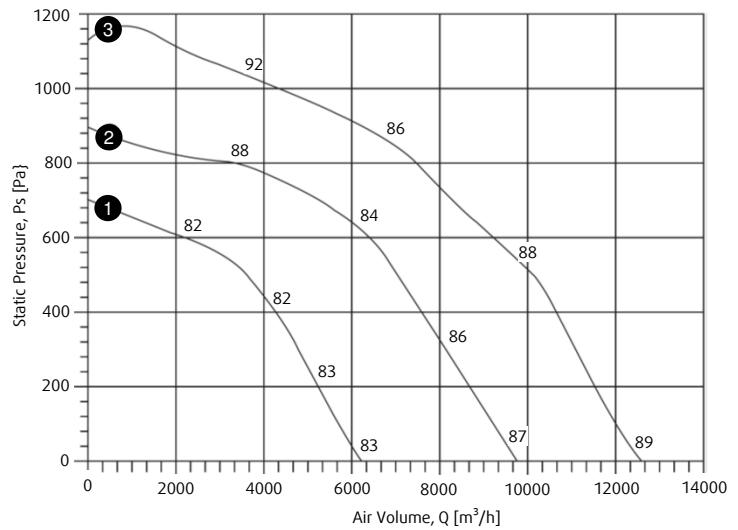
The sound power level rating shown are in decibel, referred to 10<sup>-12</sup> watts.

- Performance certified is for installation type D – Ducted inlet, Ducted outlet, Speed (RPM) shown is nominal. Performance is based on actual speed of test. Performance ratings do not include the effects of appurtenances (Accessories).
- Values shown are for inlet Lwi and Lwi(A) sound power levels for installation type D : ducted inlet, ducted outlet. Ratings include the effects of duct end correction.

### Performance curves



- ① MUB(A) 042 500D4-A2 - 1435rpm
- ② MUB(A) 062 560D4-A2 - 1456rpm
- ③ MUB(A) 062 630D4-A2 - 1471rpm



### Technical data

MUB(A)		042 500D4-A2	062 560D4-A2	062 630D4-A2
Voltage	V	415	415	415
Frequency	Hz	50	50	50
Phase	-	3	3	3
Max. Motor Input Watts	W	1500	3000	4000
Max. Current	A	3.20	4.50	7.90
Nominal Speed	RPM	1435	1456	1471
Max. Airflow	m3/h	6152	9702	12643
Sound Pressure level at 3m	dB(A)	64	67	69
Max. Temperature	°C	40	40	40
Motor Insulation Class		F	F	F
Motor Protection	IP	55	55	55
Weight	kg	70	130	135

### Sound data

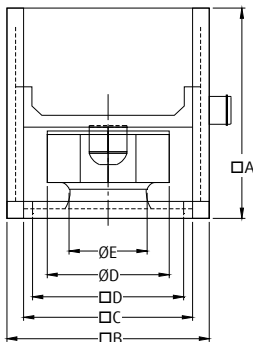
Single figure on performance curves are overall inlet LwiA sound power levels, derived from measurements taken in laboratory specifically under ducted conditions. Following is the inlet Lwi sound power levels (dB) in eight octave bands maximum airflow (0Pa):

Model	63	125	250	500	1k	2k	4k	8k	Overall
042 500D4-A2	93	93	86	80	72	71	68	70	97
062 560D4-A2	94	97	90	81	79	76	73	76	99
062 630D4-A2	95	99	92	83	81	78	77	77	101

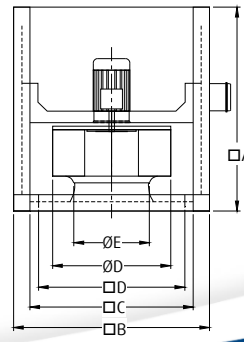
The sound power level rating shown are in decibel, referred to 10<sup>-12</sup> watts.

- Performance certified is for installation type D – Ducted inlet, Ducted outlet, Speed (RPM) shown is nominal. Performance is based on actual speed of test. Performance ratings do not include the effects of appurtenances (Accessories).
- Values shown are for inlet Lwi and Lwi(A) sound power levels for installation type D : ducted inlet, ducted outlet. Ratings include the effects of duct end correction.

### Dimensions



Model	□A	□B	□C	□D	øD	øE
025 355E4-A2	500	500	420	378	355	224
042 400E4-A2	670	670	590	548	404	253
042 450E4-A2	670	670	590	548	454	286



Model	□A	□B	□C	□D	øD	øE
042 500D4-A2	670	670	590	548	504	321
062 560D4-A2	800	800	720	676	570	361
062 630D4-A2	800	800	720	678	635	407