

MUB (A)/T Kitchen Cabinet Fan

Features

- Motor outside of the air stream.
- Low sound level.
- Maintenance-free and reliable.

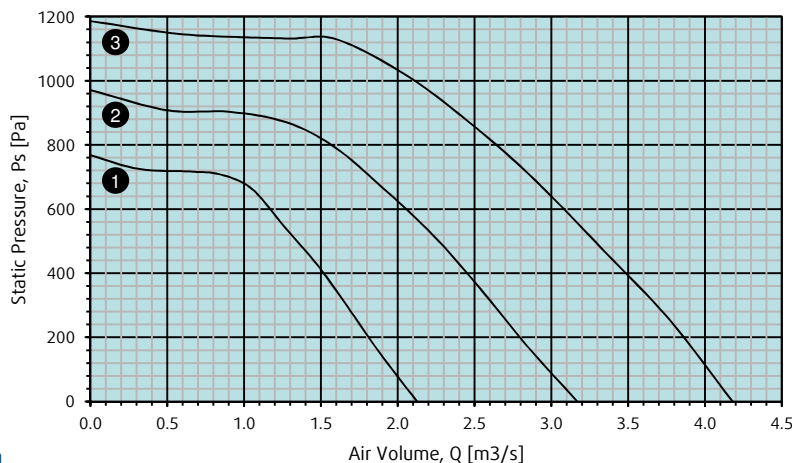
All MUB(A)/T fans have impellers with backward curved blades, manufactured from Galvanised Iron, and IEC standard motors for all 415V three phase motors. Motors are outside the air stream.

The casing consists of an aluminium frame with fiberglass reinforced plastic / aluminium corners and double skin, galvanised steel panels with a 20mm mineral wool insulation. Panels are removable, allowing flexible ventilation solutions.

The MUB(A)/T bottom panel is shaped as a grease tray and incorporates a premounted drain plug.



Performance curves



- ① MUB(A)/T 042 500D4
- ② MUB(A)/T 062 560D4
- ③ MUB(A)/T 062 630D4

Technical data

MUB(A)/T		042 500D4	062 560D4	062 630D4
Voltage	V	415	415	415
Frequency	Hz	50	50	50
Phase	-	3	3	3
Input power (P1)	W	1500	3000	4000
Current	A	3.5	6.4	7.8
Max. airflow	m³/h	7653	11408	15044
Fan impeller speed	r.p.m.	1390	1410	1435
Max. temperature of transported air	°C	100	100	100
Sound pressure level at 3m (20m³ Sabine)	dB(A)	65	68	70
Weight	kg	73	135	137
Insulation class		F	F	F
Enclosure class, motor	IP	IP 55	IP 55	IP 55

* Performance certified for installation type D – Ducted inlet, Ducted outlet.* Speed (RPM) shown is nominal. Performance is based on actual speed of test.

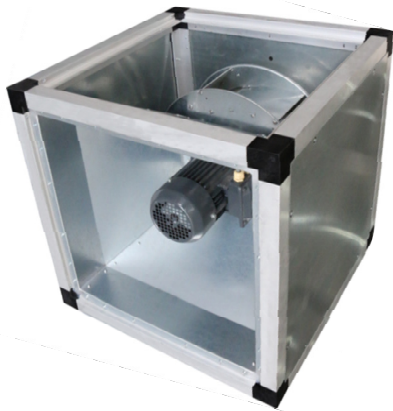
* Performance ratings do not include the effects of appurtenances (accessories). * Sound pressure level at 3m (20m³ Sabine) are not licensed by AMCA International.

Sound data

Model	63	125	250	500	1k	2k	4k	8k
042 500D4	91	97	87	80	76	73	72	67
062 560D4	99	97	89	81	79	78	82	77
062 630D4	101	100	94	84	83	81	79	75

Following is the inlet Lwi sound power levels (dB) in eight octave bands at maximum airflow (0Pa)

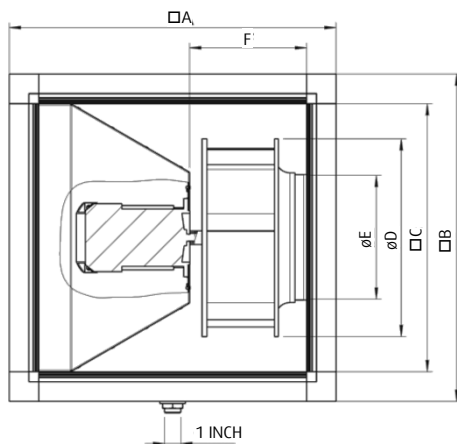
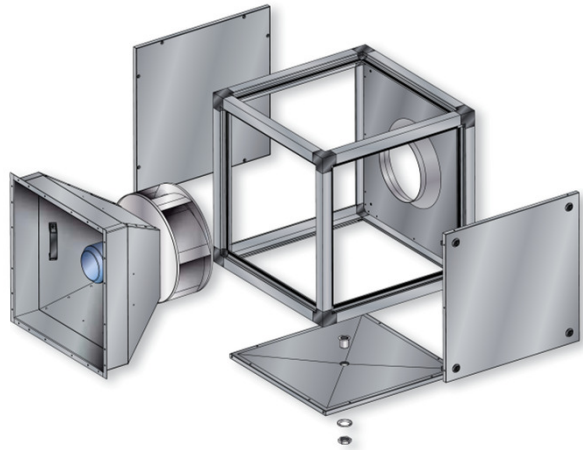
- The sound power level ratings shown are in decibels, referred to 10 – 12 watts, calculated per AMCA International Standard 301. Values shown are for inlet Lwi sound power levels for installation type D: ducted inlet, ducted outlet. Ratings include the effects of duct end correction.



- Temperature of transported air up to 100°C.
- Multifunctional use for example for kitchen exhaust.
- Easy to maintain.
- Airflow direction can be modified on site.
- Sizes from 500 to 630.
- Air flow up to 15,000 m³/h.



Drain
Grease and condensate tray, insulated double skin panel with 1" drain plug as standard.



Dimensions

MUB(A)/T	□A	□B	□C	∅D	E	F	In metric
MUB 042 500	670	670	548	504	321	300	
MUB 062 560	800	800	718	570	361	321	
MUB 062 630	800	800	718	635	407	321	



Systemair Sdn Bhd certifies that the MUB(A) / T Kitchen Cabinet Fan shown herein are licensed to bear the AMCA Seal. The ratings shown are based on tests and procedures performed in accordance with AMCA Publication 211 and AMCA Publication 311 and comply with the requirements of the AMCA Certified Ratings Program.