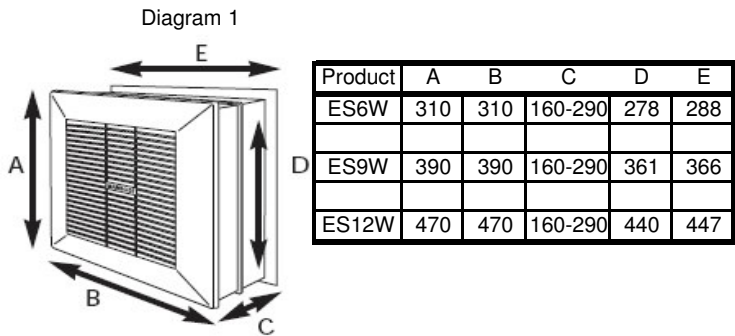


# OPERATING & INSTALLATION INSTRUCTIONS FOR EXPRESS-AIR WALL & PANEL MODEL COMMERCIAL FANS.

1. Cut a hole through the wall to suit fan type. See diagram 1 and dimensions D&E



2. Fit the telescopic sleeve into the wall. The sleeve is adjustable and suitable for cavity or solid walls. ( A longer extension sleeve is available to order) Make sure there is a slight tilt to the outside to allow any water which may get in through the outside grille, drain to the outside.

**(IMPORTANT Ensure a minimum 300mm of power cable is passed through the cable entry for the electrical connections.)**

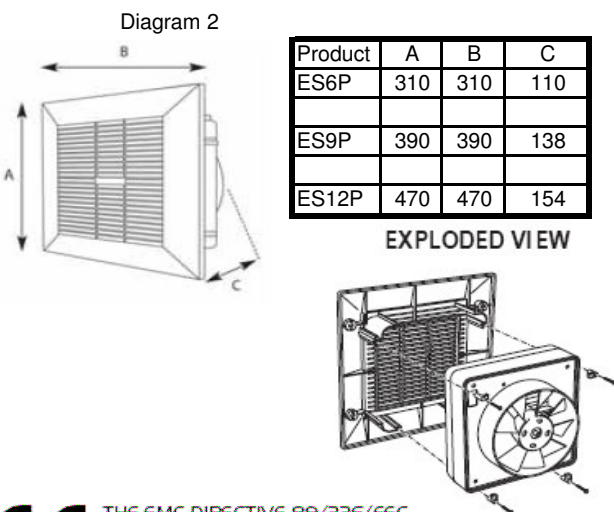
3. Build in the sleeve and make good around the edges. The external and internal grilles have a flange that over hangs the sleeve.

## THE – PANEL RANGE

4. Is supplied without the sleeve and external grille. The series is designed as a replacement for existing installations and fits most makes of sleeve and wall box with little or no modifications to the existing wall box installations. See Diagram 2 for dimensions.

5. All models of the series are secured internally by 4 mounting screws, and secured externally by 4 mounting screws. After fixing the front and rear sections ensure you insert the hole plugs provided.

**(IMPORTANT: Always ensure that the supply cable cannot obstruct the fan blade.)**

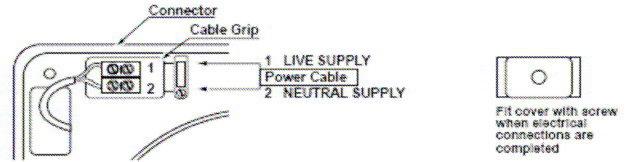


6. Electrical Connections

## ES6W and ES6P Models

This model can only be wired for extract.

Connect the power into the terminal located on the rear of the fan.



## 9" and 12" Fans Wall & Panel Models

The electrical connection using fixed wiring built into the wall is made via a 5 pin plug in connector (complete with cable grip) which is supplied with each fan unit for ease of electrical installation when connected to the incoming power cable it simply plugs into the rear of the fan unit.

**NOTE (Diagram A)** The 6", 9" and 12" fans series can be wired via 3 core cable for intake only.

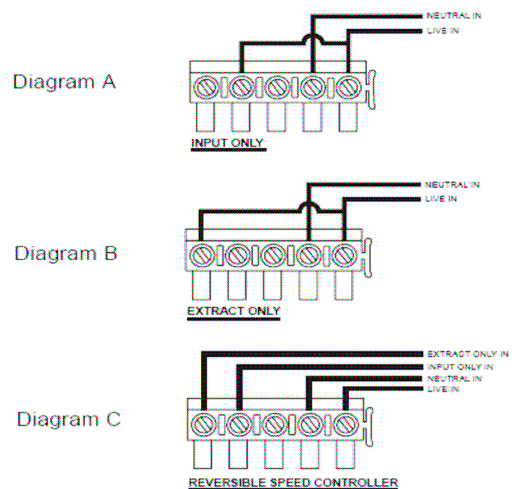
**NOTE (Diagram B)** The 6", 9" and 12" fans series can be wired via 3 core cable for extract only.

**NOTE (Diagram C)** If the 2 speed reversible controller is used with the 9" and 12" fans only. 5 core cable is required (which is available separately).

These fans are double insulated and do not require an earth. All wiring must comply with current IEE regulations.

A double pole isolating switch, having a contact separation of at least 3mm in all poles, must be used with a 3amp fuse fitted. The fan must not be accessible to a person using either a bath or a shower and mounted a minimum of 1.8m from the floor.

## Plug Wiring Diagram



## 1. DIAGRAM A Intake ONLY

To change the airflow direction remove link from terminal 1 in the plug and connect into terminal 2.

## 2. DIAGRAM B EXTRACT ONLY

All models are pre wired in factory to extract only. When the cable supplied with the socket for test purposes is connected to a fused spur or plug socket.

## 3. DIAGRAM C REVERSIBLE SPEED CONTROLLER

For the 9" and 12" models using the reversible variable speed controller part no. **EAC9/12**

1. Electrical

220-240V AC.50HZ IP44  
Temperature . Max 40°C

Size 6" - RANGE - 45W

Size 9" - RANGE - 80W

Size 12" - RANGE - 120W

THIS FAN SERIES IS DOUBLE INSULATED AND DOES NOT REQUIRE AN EARTH. THE EARTH TERMINAL IS PROVIDED FOR SPECIAL INSTALLATIONS ONLY.

### NOTE

**Do not install within a shower cubicle or anywhere else where there is a high risk of the fan being sprayed with water.**

**Fan to be fitted a minimum 2.3 metres from the floor.**

### IMPORTANT

**Switch off mains supply before making any electrical connections. If in any doubt contact a qualified electrician.**

**The appliance is not intended for use by young children or infirm persons without supervision.**

**Young children should be supervised to ensure that they do not play with the appliance.**

**Precautions must be taken to avoid the back-flow of gases into the room from the open flue of gas or other open-fire appliances when mounted in outside windows or walls.**

### Warranty & Service

This product is guaranteed for 12 months and is covered by service or replacement where applicable. Fans & Spares are happy to provide you with any assistance you may require with all aspects of service enquiries.

Please call on 0121 322 0200.

**IMPORTANT**  
**THE FLAPS ON THE**  
**AUTOMATIC FAN WILL TAKE**  
**UP TO ONE MINUTE TO**  
**OPEN AND CLOSE**