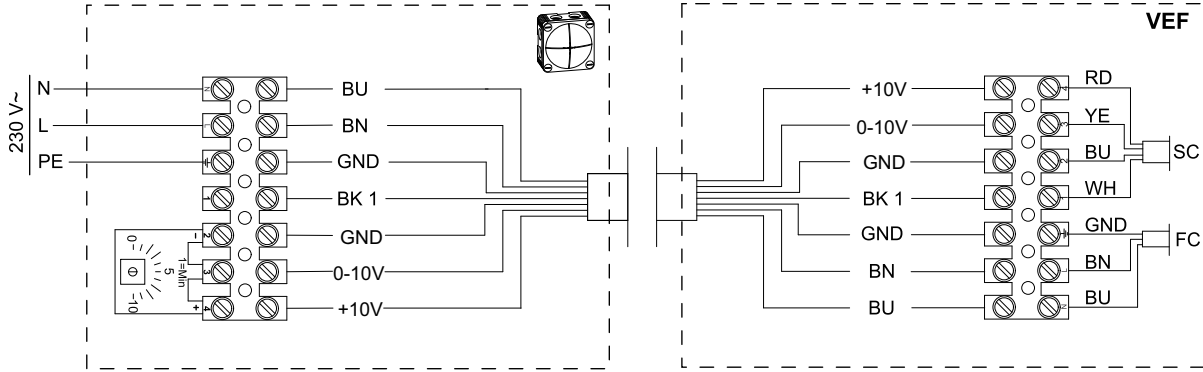
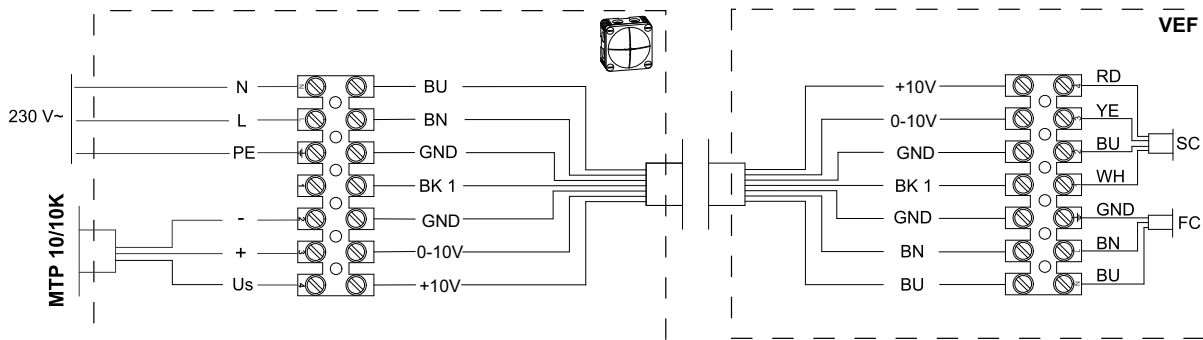


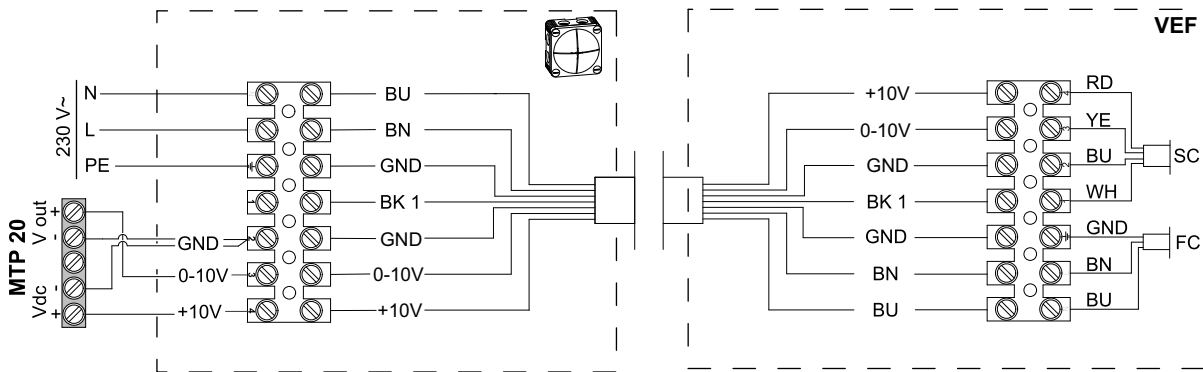
VEF



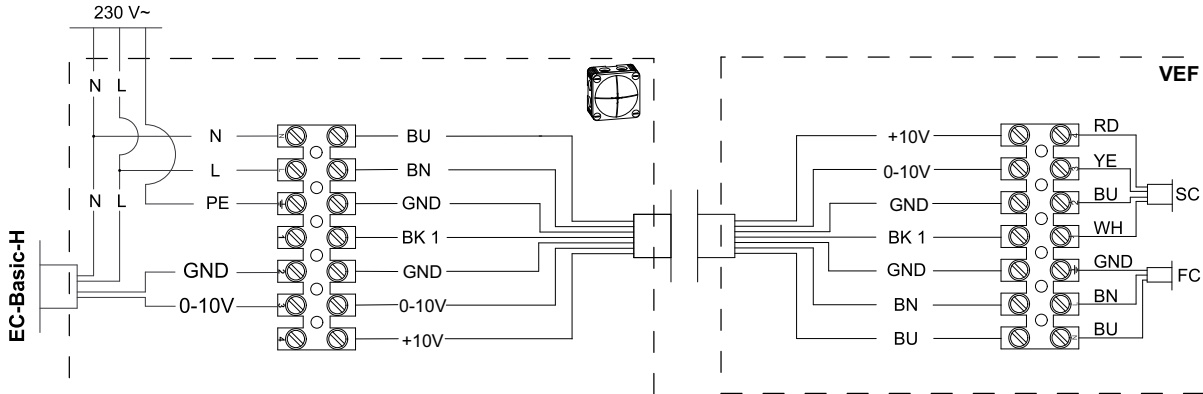
VEF + MTP 10/10K



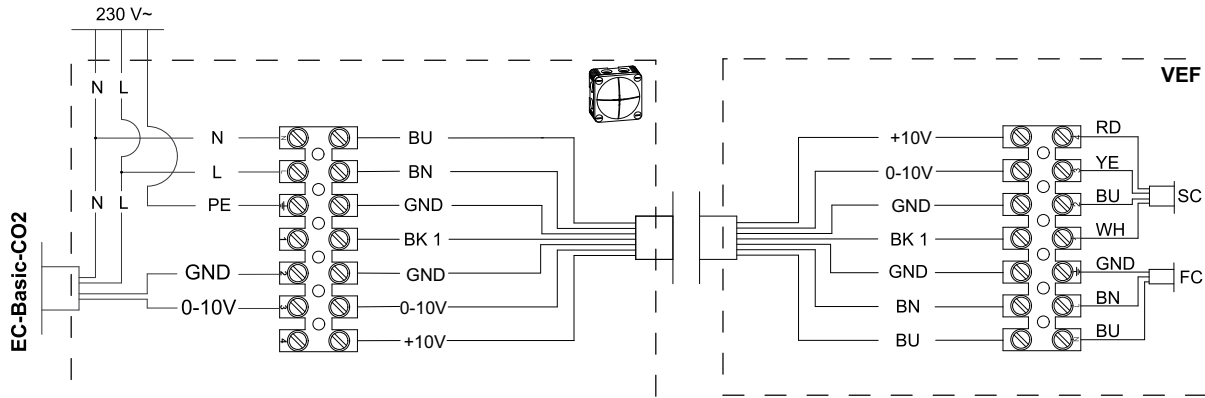
VEF + MTP 20 3-Step



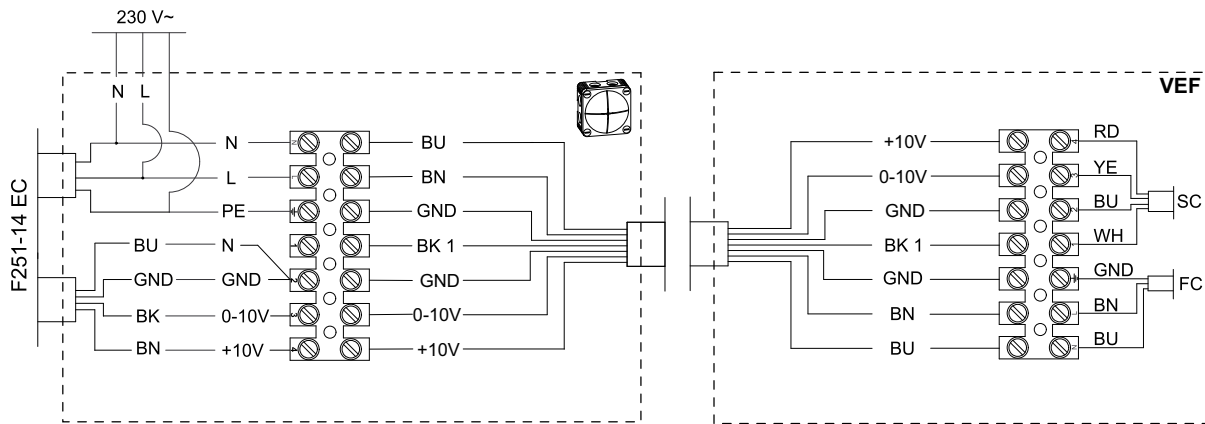
VEF + EC-Basic-H



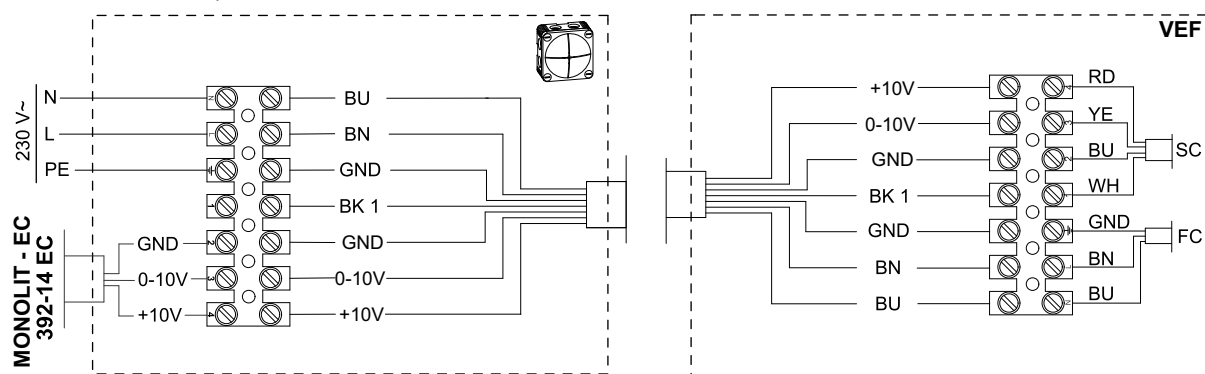
### VEF + EC-Basic-CO2



### VEF + F251-14 EC



### VEF + 392-14 EC / MONOLIT - EC



L	Supply connection, power supply, phase, see nameplate for voltage range
N	Supply connection, power supply, neutral conductor, see nameplate for voltage range
PE	Ground connection
1	Not used. Tach output, open collector, 1 pulse per revolution, max = 10 mA, SELV
2 (-)	Reference ground for control interface, SELV
3	0-10 V / PWM control input, Ri=100 kΩ, SELV
4 (+)	Fixed voltage output 10 VDC +/-3 %, max. 10 mA, short-circuit-proof, power supply for ext. devices, SELV

BU	Blue
BN	Brown
BK	Black
GND	Ground
RD	Red
YE	Yellow
WH	White
SC	Signal cable
FC	Fan cable