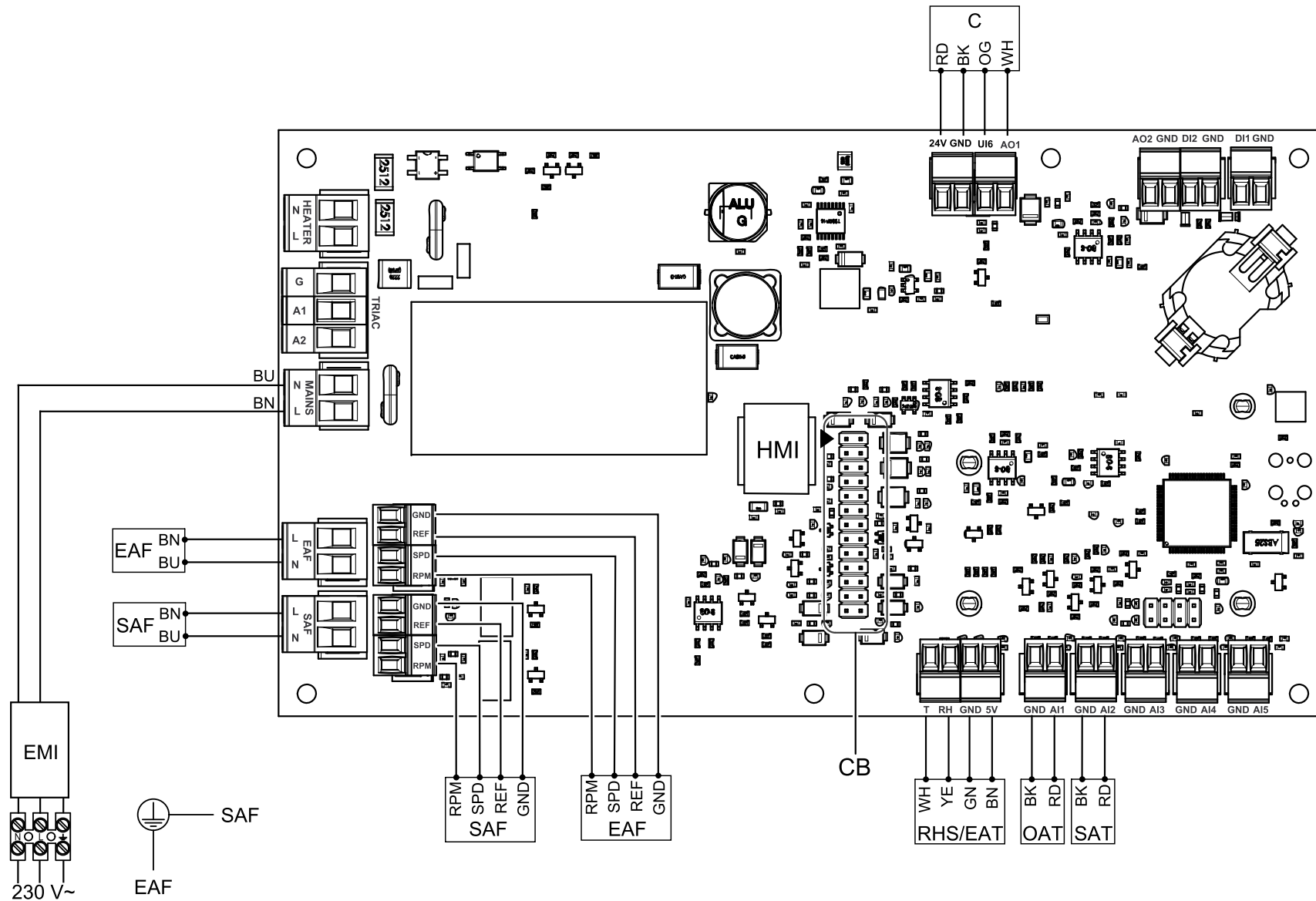
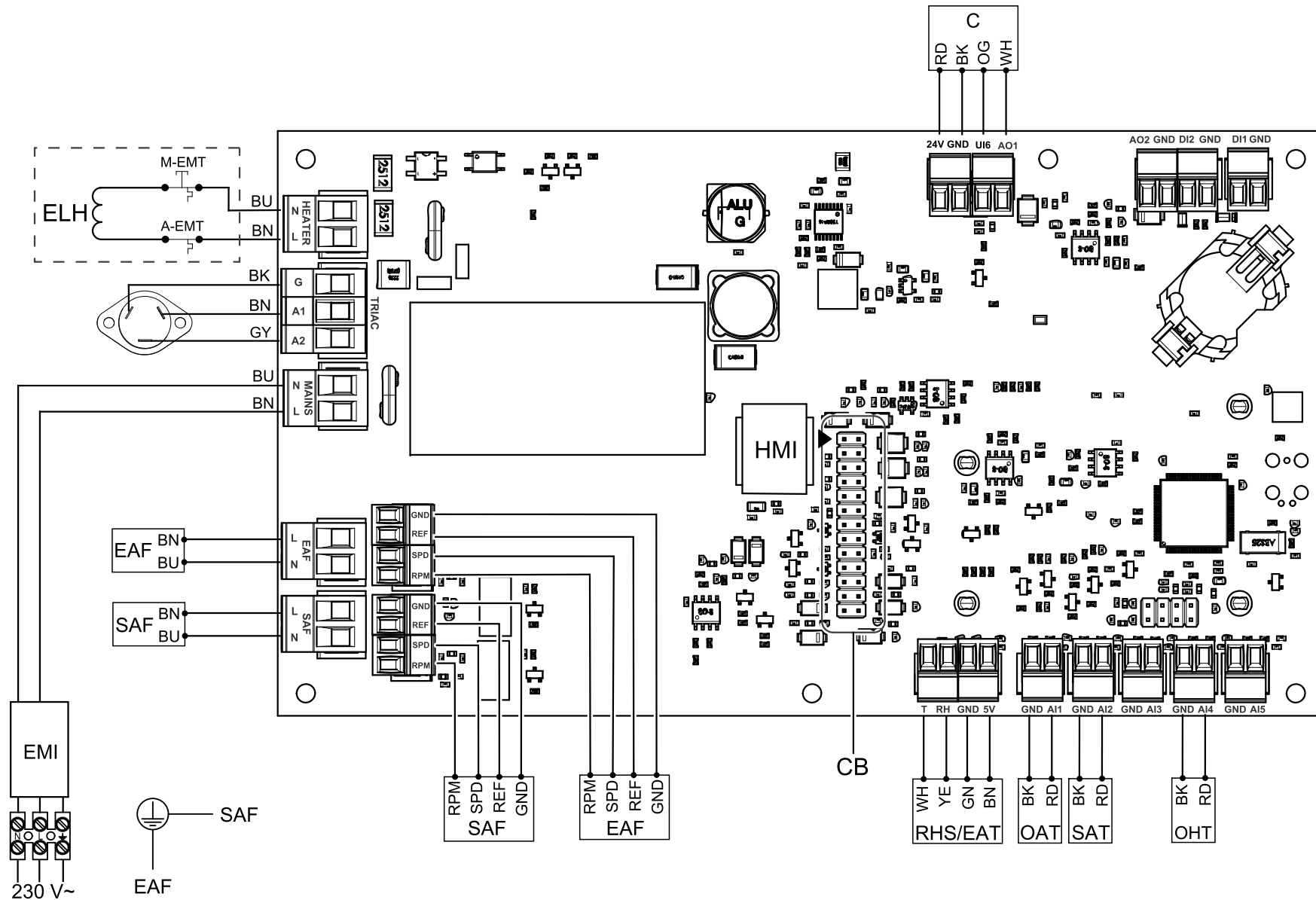


Standard configuration

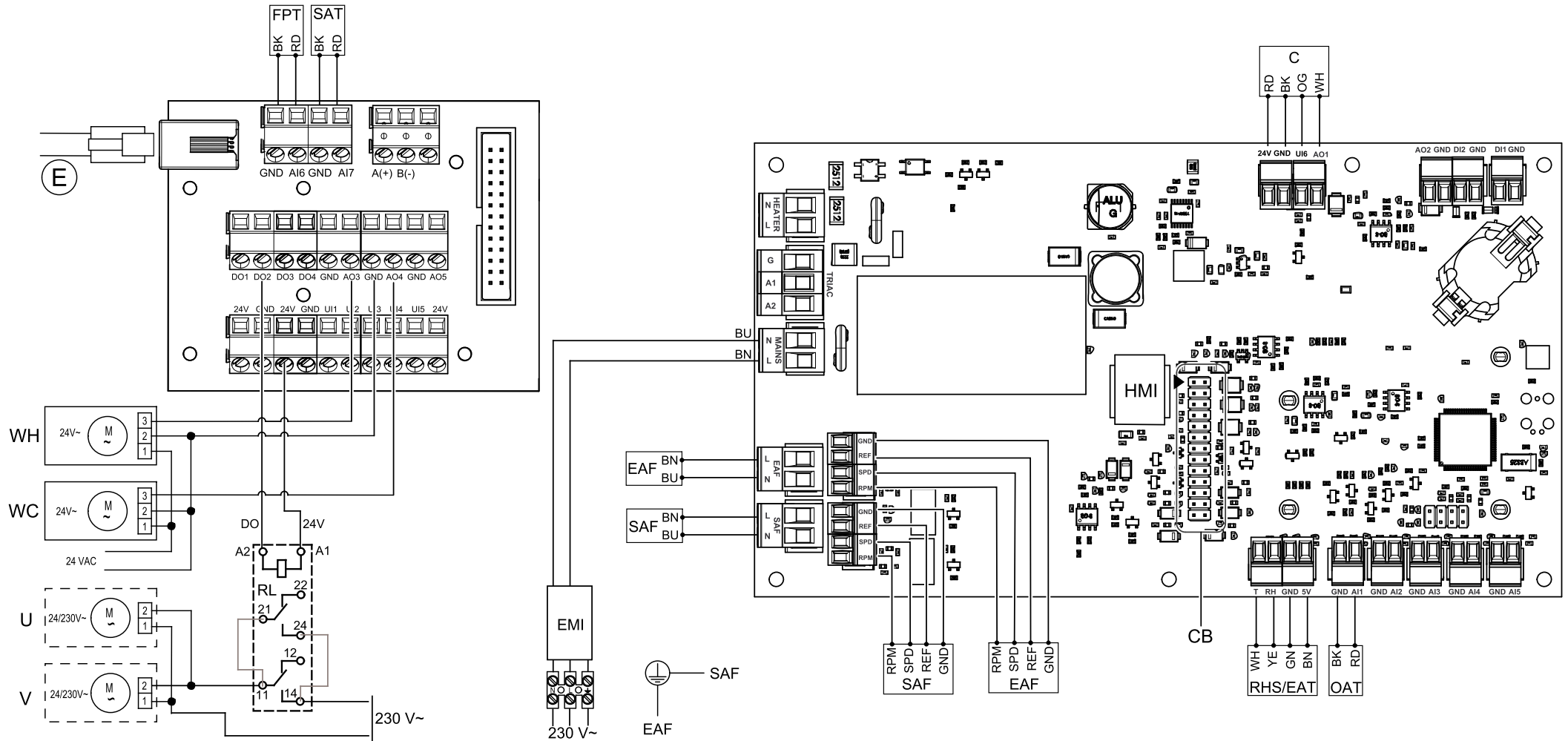


Units with electrical reheater

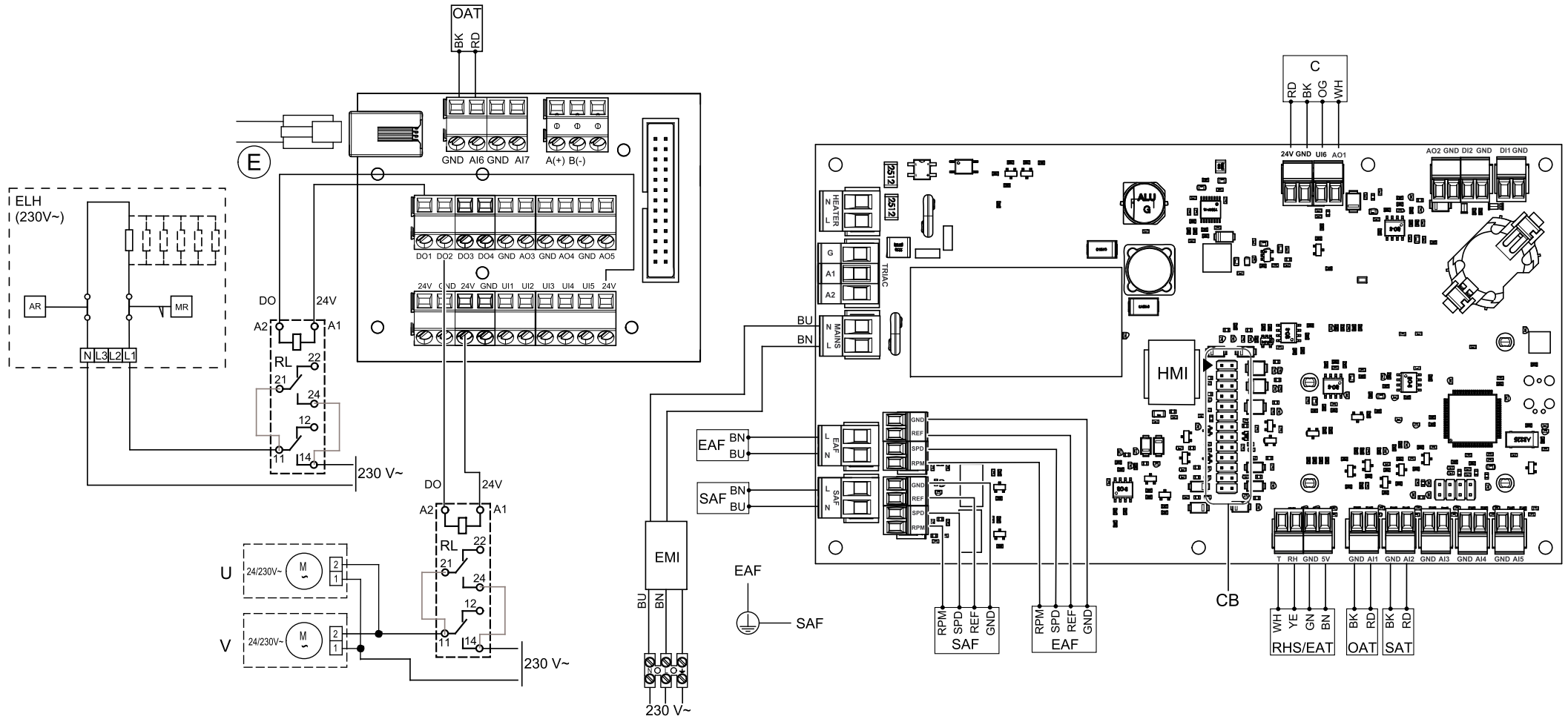


d

Units with hot water heating + water cooling



Units with electrical pre-heater (230V~)



Symbol	Description
SAF	Supply air fan.
EAF	Extract air fan.
SAT	Supply air temperature sensor. ¹
BRK	All phase breaker.
ECT	Extra controller temperature sensor.
MR	Overheat protection with manual reset.
AR	Overheat protection with automatic reset.
RL	Relay, switch signal 24V DC
EMI	Electromagnetic interference filter for 230 V AC.
ELH	Electrical heater battery.
CB	Connection to external connection board.
OHT	Overheat protection sensor. ²
OAT	Outdoor air sensor.
FPS	Frost protection sensor ³
M-EMT	Emergency thermostat, manual reset 120°C (normally closed contact)
A-EMT	Emergency thermostat, automatic reset 60°C (normally closed contact)
RHS/EAT	Internal relative humidity/Extract air temperature sensor.
E	External control panel.
C	Motor control (bypass damper).
WH	Water valve actuator, heating. ⁴
WC	Water valve actuator, cooling. ⁵
U	Damper motor Outside air.
V	Damper motor Exhaust air.
BU	Blue.
BN	Brown.
BK	Black.
RD	Red.
YE	Yellow.
GY	Gray.

WH	White.
GN	Green.

¹ For water heating/cooling battery,

² Units with electrical re-heater battery.

³ For water heating battery.

⁴ Water heater can be connected to any free analog output (AO) either on connection board or main board and then configured in HMI.

⁵ Water cooler can be connected to any free analog output (AO) either on connection board or main board and then configured in HMI.